

# SPECIFICATIONS

## Construction

Seat / back / foot rest	Steel frame with molded foam
20.10 arm	Cut foam on plywood
20.80 arm	Cut foam on steel
Base	Stained wood (std.) or aluminum
Upholstery	Leather

## Dimensions

Width 20.00	67 cm / 26 in	Seating height	45 cm / 18 in
Width 20.10	77 cm / 30 in	Seat width	64 cm / 25 in
Width 20.80	79 cm / 31 in	Seat depth	53 cm / 21 in
Height	113 cm / 45 in	Weight 20.00	37 kg / 82 lb
Depth	78 cm / 31 in	Weight 20.10	39 kg / 86 lb
Height reclined	78 cm / 31 in	Weight 20.80	39 kg / 86 lb
Depth reclined	165 cm / 65 in		

## Functions



Upper part of back can be flexed. Neck rest slides up and down. Adjustable neck rest has side support.



Picture shows the bending points of Contura. The chair swivels 360 degrees.

## Leather Class 1: Lambada



1000 Black



1097 Lux Grey



6115 Off White



6550 Cherry



2266 Dark Brown

An embossed, translucent corrected skin, produced on South American hides. It has a soft and comfortable feel, and is a durable and easily maintained leather. The thickness of the skin is 0.8-1.0 mm. Fire retard certified.

## Leather Class 2: Prescott



Black Ink 207



Indigo 274



Lamb 208



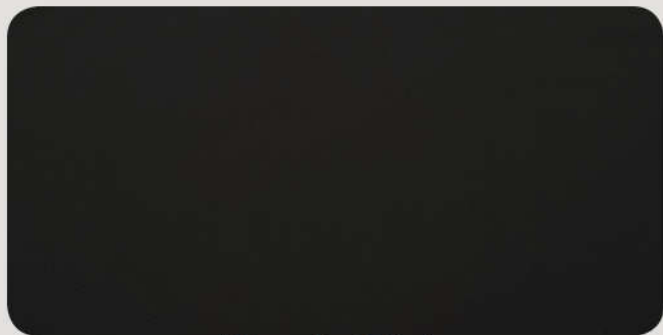
Parrot 247



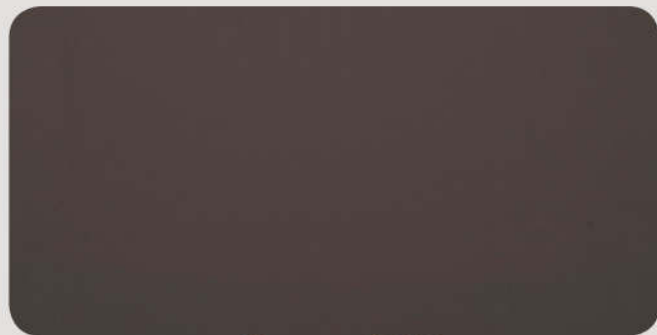
Cotto 228

Bovine of Extra European origin, lightly buffed natural grain. Through dyed; finishing with resins and pigments. Article with a pigmented and protective coat, with soft, waxy feel and semi-matt appearance. Thickness: 1.2 - 1.4 mm.

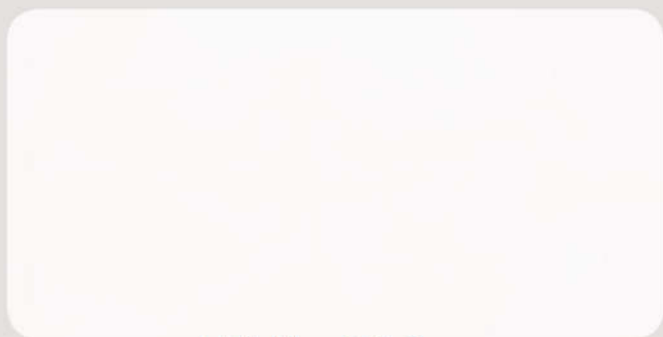
## Leather Class 3: Challenger



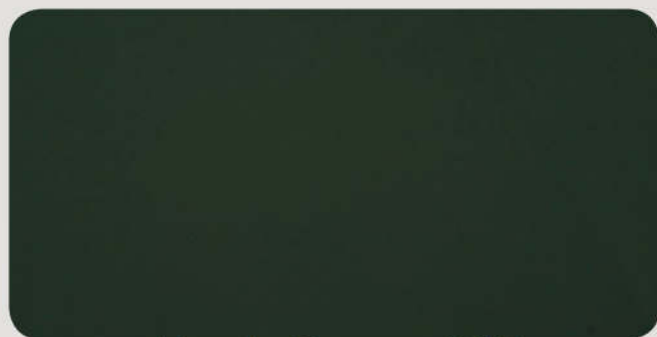
Black 004



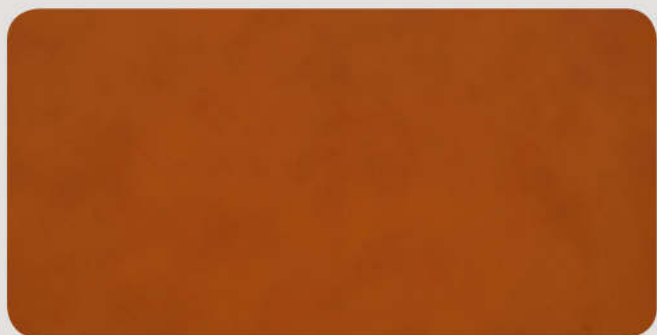
Grey 027



White 010



Dark Green 013



Cognac 025

A soft and comfortable furniture skin in semianilin quality, manufactured in Italy by European raw material. A chrome-free and environmentally friendly tanning process also helps to make Challenger a good and safe choice for your furniture. Thickness: 1.1 - 1.3 mm.

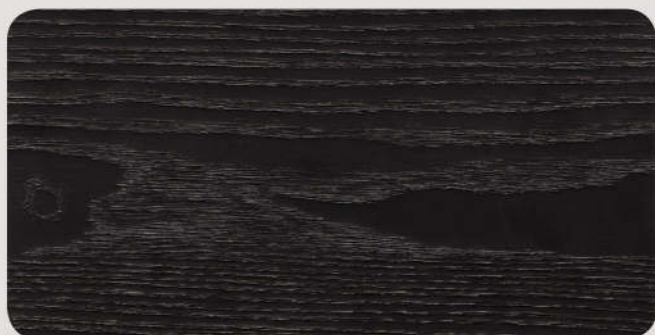
## Base Options



Wooden base (std.)



Aluminum base



Black stained wood (std.)



Espresso stained wood



Mahogany stained wood



Cherry stained wood

## Additional Options



Standard neck rest



Adjustable neck rest



Inflatable lumbar support



Side table (only for 20.00)



Mechanical (std.)



Motorized